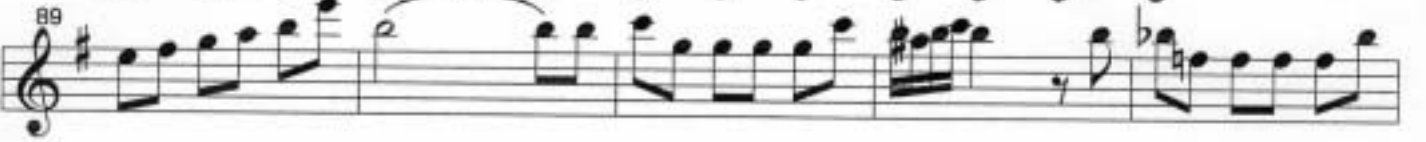


Gypsy Dance

2nd

The musical score for 'Gypsy Dance' (2nd part) is written in treble clef with a key signature of one sharp (F#) and a 3/4 time signature. The score consists of ten staves of music, with measure numbers 1, 7, 12, 17, 22, 27, 32, 37, 42, and 47 marked at the beginning of their respective staves. The music features a variety of rhythmic patterns, including eighth and sixteenth notes, and rests. A double bar line with a '2' above it is present at the beginning of the first staff. The piece concludes with a final note on the tenth staff.



Musical score for the 2nd part of a piece, measures 109-149. The score is written in treble clef with a key signature of one sharp (F#). The music features a variety of rhythmic patterns, including eighth and sixteenth notes, and rests. Measure 124 includes a trill (tr) over a note. Measure 144 includes a fermata over a note. The score concludes with a double bar line at measure 149.