

SYMPHONIE FANTASTIQUE

Op.14

2. Un bal

H.Berlioz(1803-1869)

Arr. M.Eguchi

Valse Allegro non troppo

1st-2

8 *mf* 3

15 *p* 3 *mf* 3

22 3

29 *ff*

36 *dolce estenero* *p*

43 *sf* *rallent*

50 *a tempo* *sf*

57 3 3 3

64 *sf*

Detailed description: This image shows the first two staves of a musical score for 'Un bal' from 'Symphonie Fantastique'. The score is written for a first and second flute part. It begins with a treble clef and a key signature of three sharps (F#, C#, G#). The tempo is 'Allegro non troppo'. The score consists of ten lines of music. The first line starts at measure 8 with a mezzo-forte (*mf*) dynamic and a triplet of eighth notes. The second line starts at measure 15 with a piano (*p*) dynamic and another triplet. The third line starts at measure 22 with a triplet. The fourth line starts at measure 29 with a fortissimo (*ff*) dynamic and a series of sixteenth-note chords. The fifth line starts at measure 36 with a 'dolce estenero' marking and a piano (*p*) dynamic. The sixth line starts at measure 43 with a sforzando (*sf*) dynamic and a 'rallent' marking. The seventh line starts at measure 50 with an 'a tempo' marking and a sforzando (*sf*) dynamic. The eighth line starts at measure 57 with three triplets of eighth notes. The ninth line starts at measure 64 with a sforzando (*sf*) dynamic and a long note. The score ends with a double bar line.

71

pp

78

85

p *sf*

92

p *sf*

99

non rall.

106

sf *ff*

113

ff *espr.* *p*

122

129

136

143



150



157



165



172



179



186



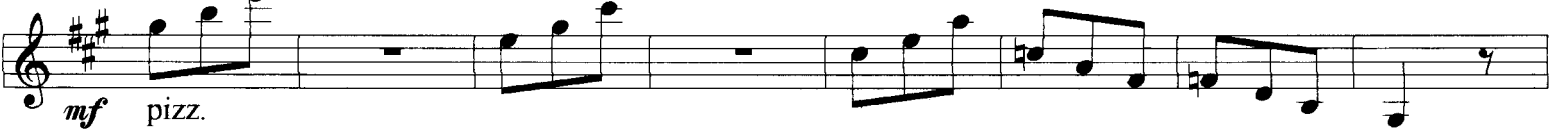
193



200



207



215

nat. *pp* *cresc. poco a poco*

222

tr. *f*

229

mf

236

243 *rall.*

rall. *a tempo*

250

rall. *a tempo* *f* *p*

257 *animato*

animato

264

p

271

p

278

f >

285 *ff*

292 *ff*

299 *poco rall.*

309 *poco rall.* *rall.*

319 *a tempo con fuoco* *ff* *sf* >

328 *sf* >

337 *animato* *p* *cresc.*

345 *mf*

352 *ff*

360 *sf*