

Die Kunst Der Fuge BWV1080/10

P1

12

16

21

27

31

36

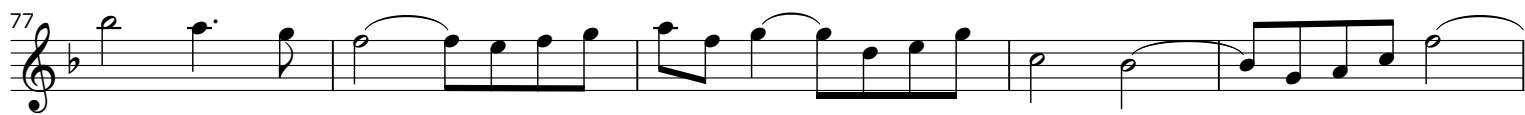
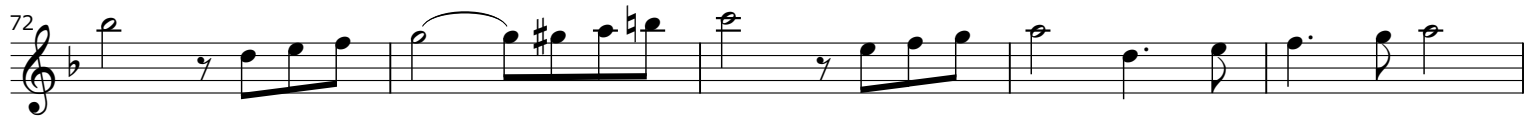
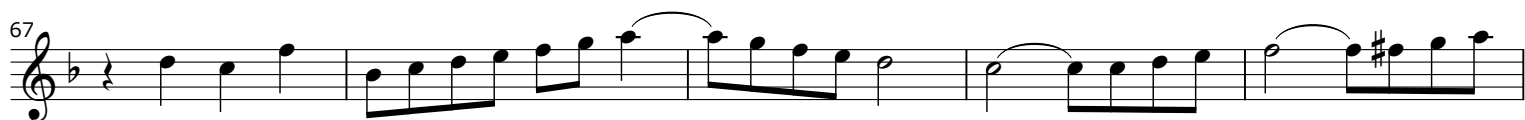
41

46

51

56

62



Die Kunst Der Fuge BWV1080/10

8

5

11

18

23

36

41

47

52

60

64

69

Musical score for BWV 1080/10, measures 74-115. The score is written in treble clef with a key signature of one flat (B-flat). The time signature is 8/8. The music features a variety of rhythmic patterns, including eighth and sixteenth notes, and rests. Phrasing is indicated by slurs and ties. Measure numbers are provided at the beginning of each line: 74, 80, 85, 90, 95, 99, 103, 106, 110, and 115. The score concludes with a double bar line at measure 115.

Die Kunst Der Fuge BWV1080/10

3
8

7
8

12
8

17
8

23
8

31
8

36
8

47
8

52
8

57
8

66
8

71
8

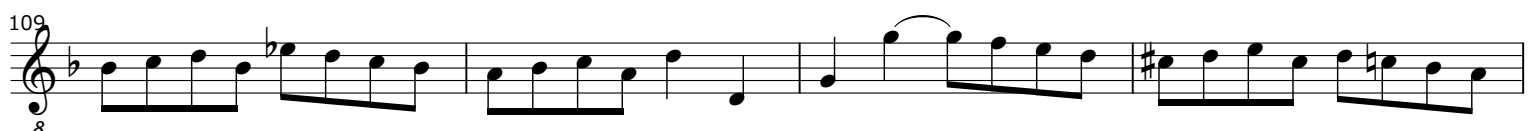
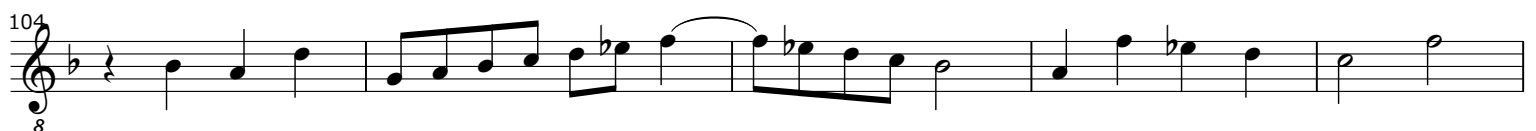
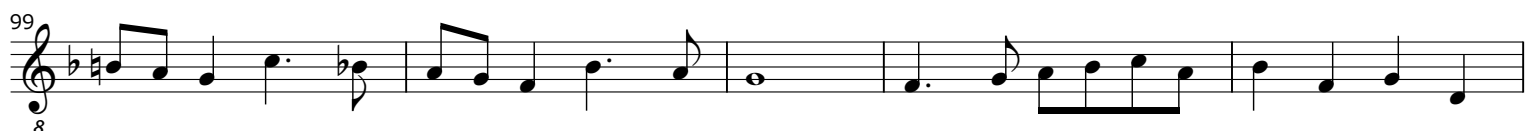
2

3

6

5

tr



Die Kunst Der Fuge BWV1080/10

P4

12

18

24

34

40

45

52

59

65

72

79

90

97

107