

Concerto in Sol minore

per Violino, Archi e Organo (o Cembalo)

L' Estate

Da "Il Cimento dell'armonia e dell'invenzione"

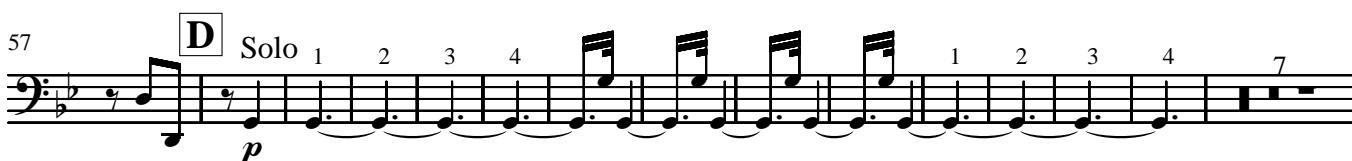
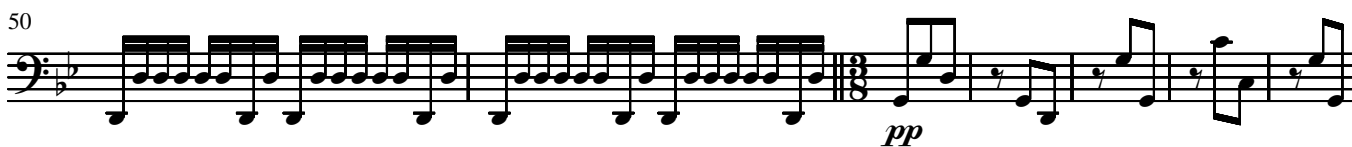
Op. VIII no. 2 - F. I no. 23

Antonio Vivaldi

1678 - 1741

Violoncello

Allegro non molto



78 **E** *Vn. I* **F** *Tutti Vc.*
f

92 1 2 3 4 5

97 6 7 8 9 10

102

107

112 **G** Solo
pp

125

134

144 1 2 3 4 5 6 7

155 **H** *Tutti*
f 1 2 3 4

160 ⁵ ⁶ ⁷

Musical staff 160-164 in bass clef, key of B-flat major. It features a sequence of eighth-note patterns. Measure 160 has a '5' above the first note. Measure 161 has a '6' above the first note. Measure 162 has a '7' above the first note. The pattern continues through measures 163 and 164.

165

Musical staff 165-169 in bass clef, key of B-flat major. It continues the eighth-note patterns from the previous staff, with some chromatic movement in measure 168.

170

Musical staff 170-174 in bass clef, key of B-flat major. It features a more complex eighth-note pattern with some sixteenth-note runs.

Adagio ² Presto ³ Adagio

Musical staff 175-179 in bass clef, key of B-flat major, common time. It shows tempo changes: Adagio (measure 175, 2 notes), Presto (measures 176-178, 6 notes, *f*), and Adagio (measure 179, 3 notes).

8 Presto ^J Adagio ⁶ Presto

Musical staff 180-184 in bass clef, key of B-flat major, common time. It shows tempo changes: Presto (measures 180-182, *f*), Adagio (measure 183, 6 notes, *J*), and Presto (measures 184-186, *f*).

17 Adagio ² Presto Adagio

Musical staff 187-191 in bass clef, key of B-flat major, common time. It shows tempo changes: Adagio (measures 187-189, 2 notes), Presto (measures 190-192, *f*), and Adagio (measures 193-195).

Presto

Musical staff 192-196 in bass clef, key of B-flat major, 3/4 time. It features a continuous eighth-note pattern starting with a *f* dynamic.

4

Musical staff 197-201 in bass clef, key of B-flat major, 3/4 time. It continues the eighth-note pattern from the previous staff, with a fermata over the first measure.

8 ^K

Musical staff 202-206 in bass clef, key of B-flat major, 3/4 time. It continues the eighth-note pattern from the previous staff, with a fermata over the first measure and a boxed 'K' above the staff.

11



18



23



28



33



38



55



60



65



71



77

84

Q Tutti

88

92

96

Solo

R Tutti

104

109

p *f*

S

117

3

123

127