

Concerto in Mi maggiore

per Violino, Archi e Organo (o Cembalo)

La Primavera

Da "Il Cimento dell'armonia e dell'invenzione"

Op. VIII no. 1 - F. I no. 22

Antonio Vivaldi

1678 - 1741

Violoncello

Allegro

The musical score for the Cello part is written in G major (one sharp) and common time. It begins with a forte (*f*) dynamic and a half note G2. The tempo is marked 'Allegro'. The score includes several dynamic changes: *f* at measures 1, 6, and 27; *p* at measures 5, 11, and 32. There are three marked sections: Section A (measures 11-12), Section B (measures 32-35), and Section C (measures 38-41). Section C features a complex rhythmic pattern of eighth notes. The score concludes with a forte (*f*) dynamic at measure 41.

45 **D**

47

50

53

55

57 **E** Solo 1 2 3

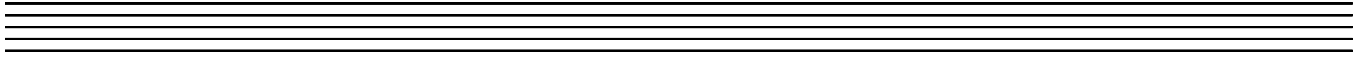
63 **F** Tutti 4 5 6 7

70 Solo

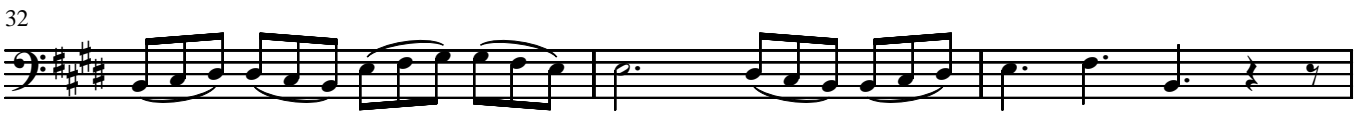
76 Tutti

80 *p*

tacet



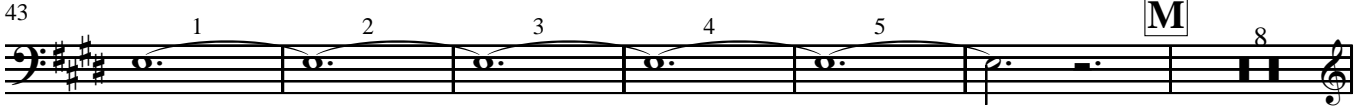
Allegro



39



43



57



62



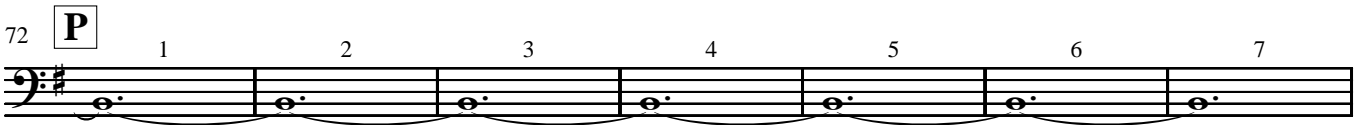
65



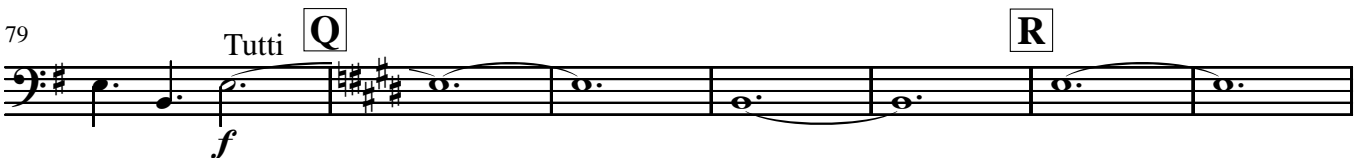
68



72



79



86

